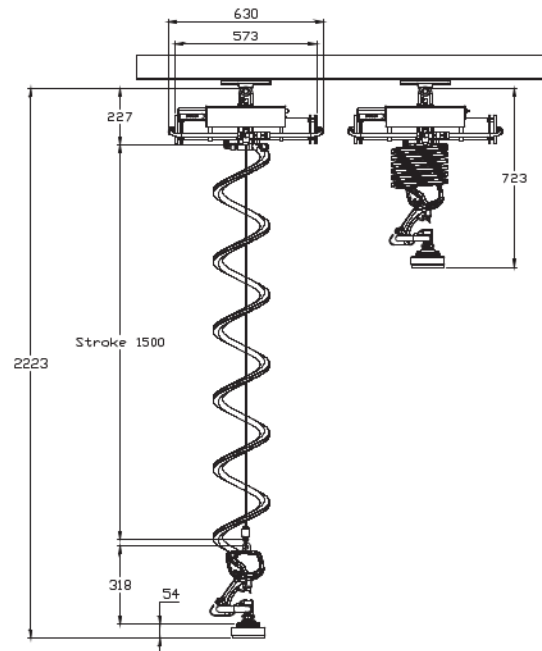
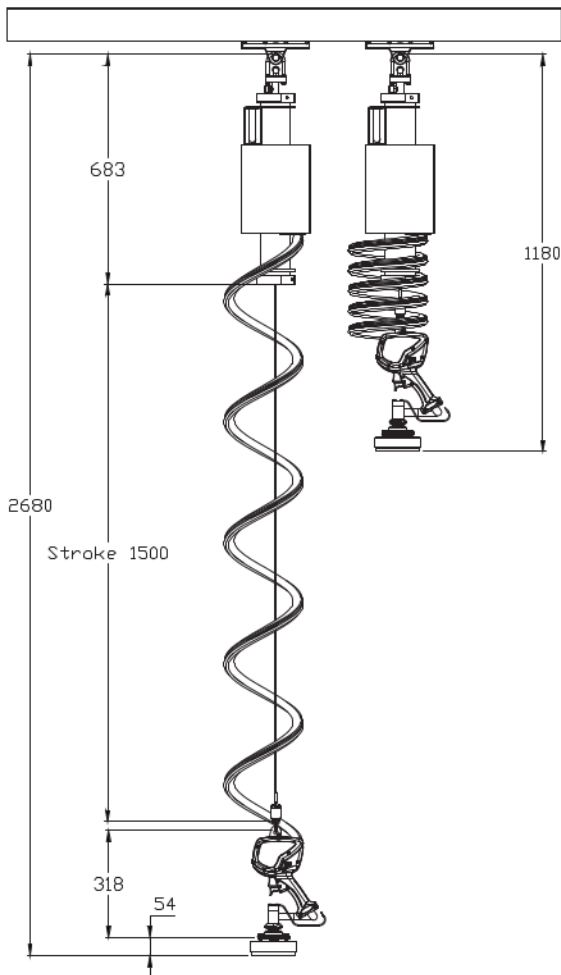




**basic**

Lifting with Basic: Vacuum and Hook

## VERTICAL/HORIZONTAL BAL-TROL WITH BASIC

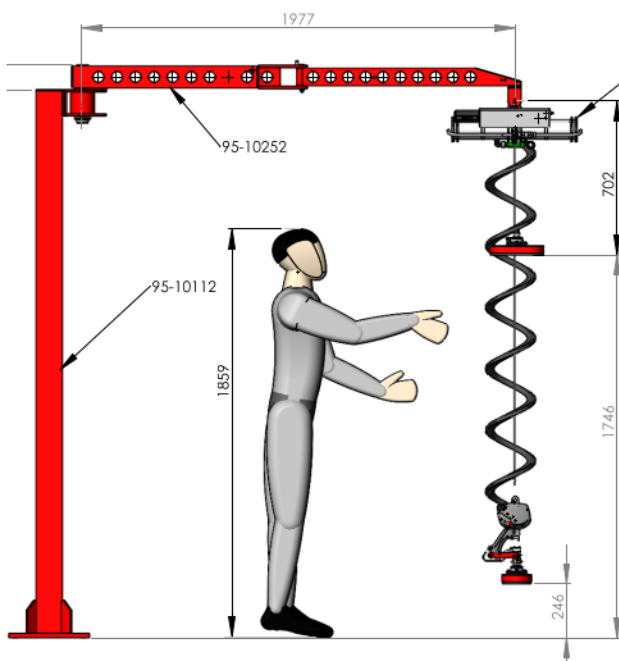


### LOW HEADROOM LIFTING

The horizontal Bal-Trol solution is recommended for areas with low headroom.

**Vertical**  
**93-10303-MK2**  
 50kg/110lbs  
**93-10334-MK2**  
 35kg/77lbs

**Horizontal**  
**93-10032-MK2**  
 50kg/110lbs  
**93-10035-MK2**  
 35kg/77lbs



### FLEXICRANE WITH BASIC\*

The smooth FlexiCrane is exceptionally flexible in comparison to other lightweight jib cranes, thanks to its own low weight and the ball bearing double joints. FlexiCrane is also available in a mobile version, moveable with only a pallet lifter. Together with the allround lift Basic, lifting can't get any easier!

 Watch Basic and FlexiCrane on [youtube.com/LiftsAll!](https://www.youtube.com/LiftsAll!)





## THE VERSATILE LIFTING TOOL

Depending on the load you can choose to grip with vacuum or with a hook. The standard hook is always attached and can be flipped down whenever needed.

### Hook Applications for Pallets...

The new hook application for Basic is custom-made for lifting EU pallets. It is easily attached to the Basic base unit and as usual you control the gripper with the buttons for up and down.

### ...and for Bags and Buckets

The Basic has an attached hook as a standard that can be flipped down whenever, but when the majority of your lifts are made with a hook, this new hook application is smoother. It can handle all kinds of bags, buckets and barrels that have a handle.



## THE APPLICATIONS FOR BASIC LIFTING TOOL

The quick connection makes Basic multi-faceted. The user switches applications in an instant for the different loads' materials, weights and sizes.

**Pull it.**



**Turn it.**

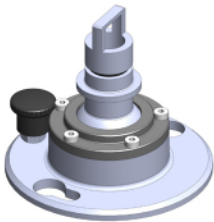


**Switch it!**



*Watch how to switch applications, easy!!  
youtube.com/LiftsAll!*

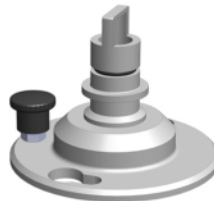
### JOINTS



#### Swiveling Ball Joint

For loads where the weight is divided unevenly or if the grip surface is uneven. Allows the vacuum head and load pivot 15 degrees and rotate endlessly. Easy to change.

Part number: 93-10012



#### Swiveling Joint

Endlessly rotating. Easy to change.

### PARKING POUCH



#### Parking pouch

When moving FlexiCrane Mobile it's a good idea to put the gripper in this pouch, in order to prevent the gripper from swinging around during the move.

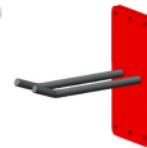
Part number: 93-10060



#### Parking fork for Basic

This parking accessory is handy when putting away the Basic unit and still easy to grab and get back to work again. The fingers are rubber covered. The holes in the plate are for 6 mm screws.

Part number: 93-10062



### BASIC STANDARD APPLICATIONS



#### Swiveling hook for buckets, bags, etc.

Width: 70 mm (2,8")

Height: 106 mm (4")

Depth: 24 mm (1")

Max load: 50 kg (110lbs)

Part number: 93-20022



#### Hook for EU pallets

Max load: 30 kg (66lbs)

Part number: 93-20023

#### Carbine Hook

Max load: 40 kg (88lbs)

Part number: 93-20037



#### Safety Hook

Max load: 50 kg (110lbs)

Part number: 93-20035



## BASIC STANDARD APPLICATIONS



### Single Medium

Cup diameter: 113,7 mm (4,5")  
 Max load - carton: 14 kg/30lbs  
 Max load - air tight: 19 kg/41lbs  
 Part number: 93-20002



### I-frame Small

Cup diameter: 77,5 mm (3")  
 Outer dist (A): 292 mm (11,5")  
 Cups dist (B): 135 mm (5,4")  
 Max load - carton: 12,5 kg/27lbs  
 Max load - air tight: 18 kg/39lbs  
 Part number: 93-20006



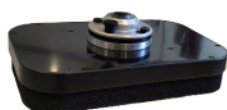
### H-frame Small

Cup diameter: 77,5 mm (3")  
 Outer dist (A): 252 mm (10")  
 Cups dist (B): 94 mm (3,7")  
 Max load - carton: 25 kg/55lb  
 Max load - air tight: 36 kg/79lbs  
 Part number: 93-20010



### I-frame Adjustable

Cup diameter: 75 mm (2,9")  
 Outer dist (A): 449,5 mm (17,7")  
 Max load - carton: 25 kg/55lb  
 Max load - air tight: 36 kg/79lbs  
 Part number: 93-20036



### Vacuum Pad

Length: 300 mm (11,8")  
 Width: 200 mm (7,8")  
 Max load: 50 kg/110 lbs  
 Part number: 93-20043

### Single Large

Cup diameter: 150 mm (6")  
 Max load - carton: 25 kg/55lbs  
 Part number carton : 93-20003

### I-frame Medium

Cup diameter: 113,7 mm (4,5")  
 Outer dist (A): 325mm (1'8")  
 Cups dist (B): 98 mm (3,6")  
 Max load - carton: 25 kg/55lbs  
 Max load - air tight: 36 kg/79lbs  
 Part number: 93-20007

### H-frame Medium

Cup diameter: 113,7 mm (4,5")  
 Outer dist (A): 285 mm (11")  
 Cups dist (B): 59 mm (2,3")  
 Max load - carton: 50 kg/110lbs  
 Max load - air tight: 50 kg/110lbs  
 Part number: 93-20011



### Single X-Large

Cup diameter: 200 mm (8")  
 Max load - carton: 50 kg/110lb  
 Max load - air tight: 50 kg/110lb  
 Part number carton: 93-20031  
 Part number air tight: 93-20005

### I-frame Large

Cup diameter: 150 mm (6")  
 Outer dist (A): 381 mm (1'3")  
 Cups dist (B): 28 mm (1")  
 Max load - carton: 50 kg/110lb  
 Part number carton: 93-20009

### Sack and Luggage Frame

Length: 420 mm (1'4")  
 Width: 265 mm (10,4")  
 Max load: 50 kg/110lbs  
 Part number: 93-20016

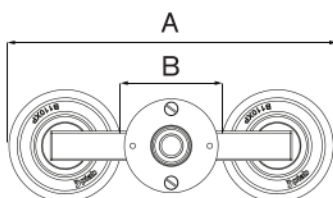
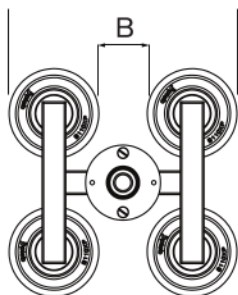
### Sack and Luggage Frame

Length: 255mm (10")  
 Width: 140 mm (5,5")  
 Max load: 50 kg/110lbs  
 Part number: 93-20017

### Sack and Luggage Frame

Length: 255mm (10")  
 Width: 140 mm (5,5")  
 Max load: 50 kg/110lbs  
 Part number: 93-20017

### A and B measurements



#### Please note:

- Safety factor 2 is included in all max loads.
- Cup diameters are approximate.
- Contact us for tailor-made I-frames and H-frames!



### The highlighted - strapped carton boxes

By adding a cell rubber gasket these cups will get an even better grip when gripping over straps  
 Part number Small, 80 cup: 14-10115  
 Part number Medium, 115 cup: 15-10151.

# HELPING YOU LIFT HEAVY...

**MAKING YOUR WORK LIGHT.**



[WWW.LIFTSALL.COM](http://WWW.LIFTSALL.COM)

## CONTACT US

### WORLDWIDE

Lifts All AB  
Passadvägen 10  
177 70 Järfälla  
Sweden  
E-mail: [inquiry@liftsall.se](mailto:inquiry@liftsall.se)  
Telephone: +46 875 490 15  
URL: [www.liftsall.com](http://www.liftsall.com)

### USA

Lifts All Inc.  
728 William Blount Drive  
Maryville, TN 37801  
USA  
E-mail: [info@liftsall.us](mailto:info@liftsall.us)  
Telephone: +1 865-324-2014  
URL: [www.liftsall.com](http://www.liftsall.com)

### BENELUX

**TILTECH NV**  
Vriesenrot 22  
9200 Dendermonde  
Belgium  
+32 52 40 95 70  
[info@tiltech.be](mailto:info@tiltech.be)  
[www.tiltech.be](http://www.tiltech.be)